

April 20, 2020

Mr. John W. Betkoski, III  
Chair, Economic Development Commission  
Town of Beacon Falls  
10 Maple Avenue  
Beacon Falls, CT, 06403

85 Willow Street  
New Haven  
Connecticut 06511  
Tel 203/562-2181  
Fax 203/787-7116  
[www.tpadesigngroup.com](http://www.tpadesigngroup.com)

**Re:    *South Main Street***  
          *Streetscape Concept Illustrative Graphics*

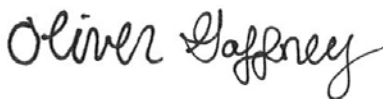
Dear Chairman Betkoski,

We are pleased to share a set of progress illustrations with you and your fellow Economic Development Commission members. These graphics have been developed using our concept plans of April 18, 2019 as well as July 2019 imagery obtained from Google Street View.

At this time, we invite you to review each sheet and provide any comments that you may have. We will make minor changes and adjustments as needed to address feedback that we receive. TPA will then attend an upcoming Commission meeting to present the illustrations and overall concept; we await further guidance from you as to the time and format.

Please do not hesitate to contact us if you have any questions. We appreciate this opportunity to work with you and the Town of Beacon Falls again.

Best Regards,



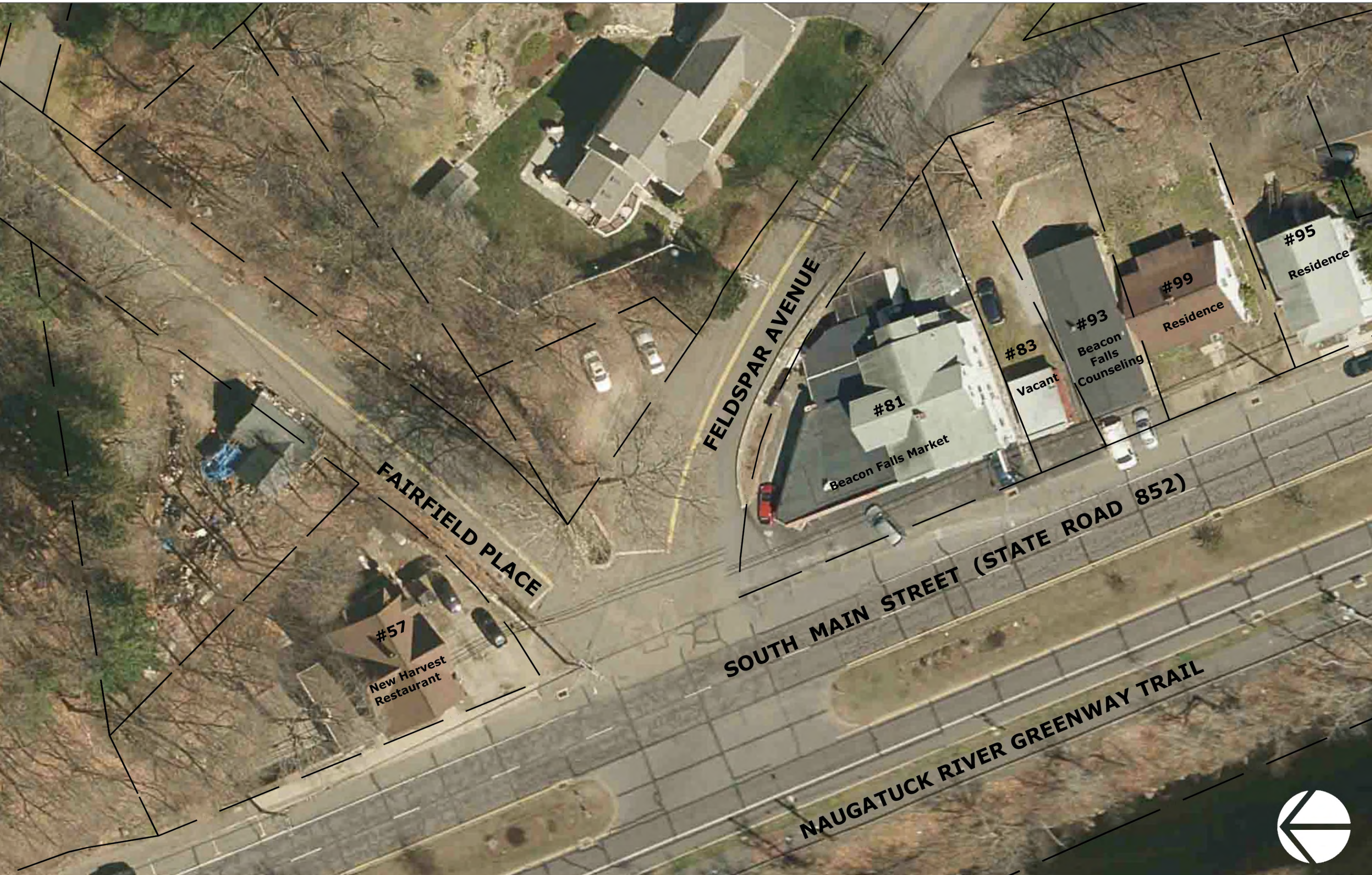
Oliver Gaffney, ASLA  
Project Landscape Architect  
TPA Design Group

*Humbert V. Sacco, Jr.*  
*David S. Golebiewski*

*encl: Photosimulations, Areas 1-5*

*Oliver W. Gaffney*  
*David A. Sacco*  
*John V. Zyrlis, Jr.*





Existing Conditions



Proposed Conditions



Existing Street View



Proposed Street View (Photosimulation)





Existing Conditions



Proposed Conditions



Existing Street View



Proposed Street View (Photosimulation)





Existing Street View

Existing Conditions



Proposed Street View (Photosimulation)

Proposed Conditions





Existing Conditions



Proposed Conditions



Existing Street View



Proposed Street View (Photosimulation)

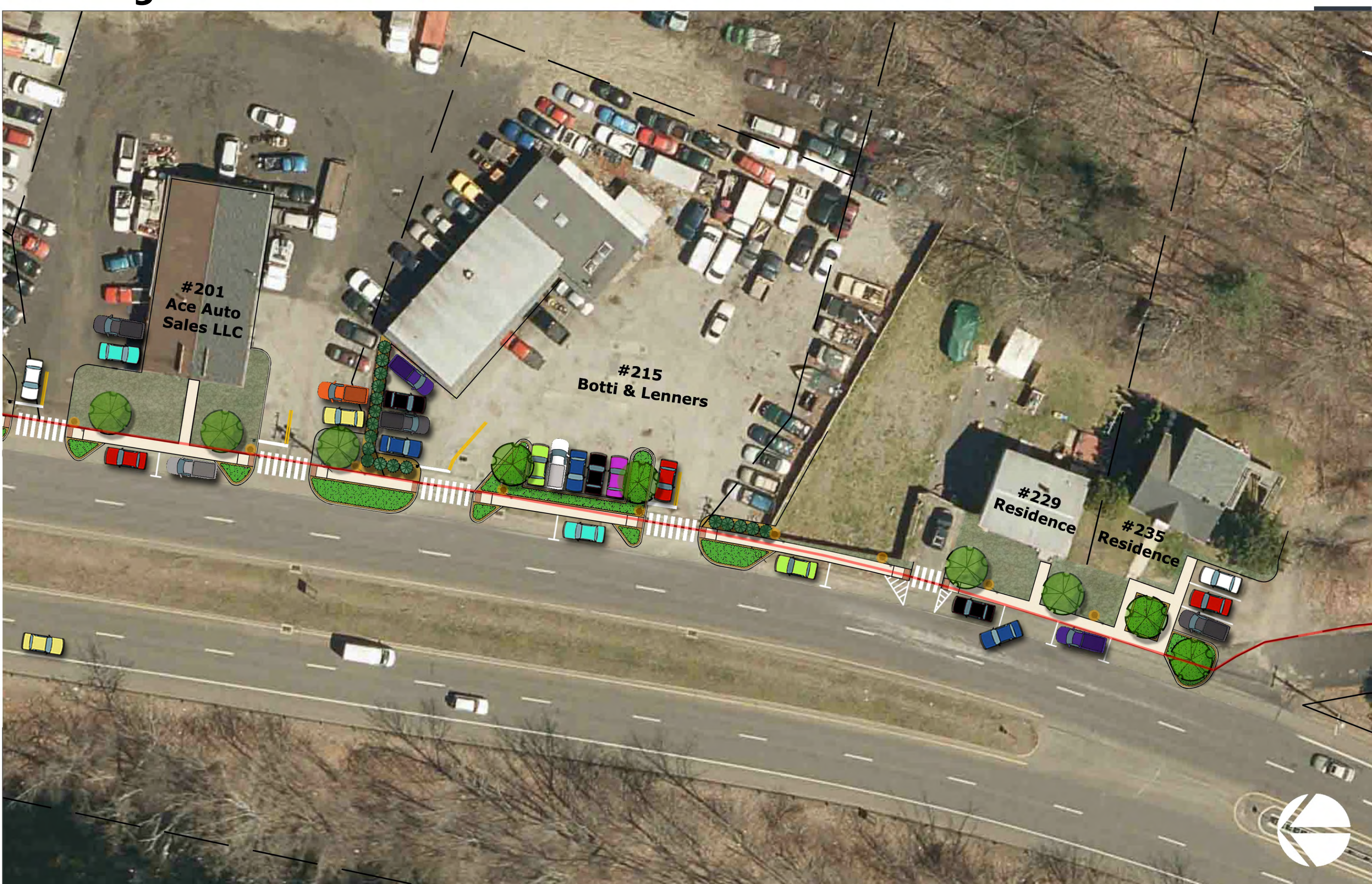




Existing Conditions



Existing Street View



Proposed Conditions



Proposed Street View (Photosimulation)