



Community Resource Inventory Online

Natural and cultural resource maps for community planning  
[nemo.uconn.edu/tools/cri](http://nemo.uconn.edu/tools/cri)

---

## A Community Resource Inventory for Beacon Falls, CT



---

*The Community Resource Inventory Online was developed by the University of Connecticut's Nonpoint Education for Municipal Officials (NEMO) Program. NEMO is an educational program of the Center for Land Use Education and Research (CLEAR): Land, Sea and Space Grant, cooperating. This project was funded in part by the CT DEP through an EPA Clean Water Act Section 319 Nonpoint Source Grant.*



# How to Use Your Community Resource Inventory

A resource inventory is an important tool for your community. The inventory is the starting point for making community planning decisions and gives a comprehensive view of key natural and cultural resources.

The information within this inventory was provided by the Community Resource Inventory Online website from the University of Connecticut's NEMO Program. The data and maps provided are from available statewide databases, primarily the Connecticut Department of Environmental Protection and UConn's Center for Land Use Education and Research (CLEAR). These maps are suitable for town or region-wide planning decisions, but are not generally appropriate for site-level work. Site and field surveys should be done to verify specific site-level questions.

Now that you have your inventory, what should you do? Here are our suggested next steps.

First: **Share** this information with members of your community's land use boards and commissions. Talk about the various maps and how they may be incorporated into the decision-making process.

Second: Begin to **build** on the basic inventory provided here. Are there some specific community-level information that needs to be added to the inventory? Some maps to consider may include parcels, zoning, community facilities, and historic resources. Although having more maps can improve the inventory, make sure that the additions will really assist in making community decisions and aren't being added just because they are interesting. Too many maps will make your inventory unwieldy and difficult to update.

Third: Determine what commission is responsible for **maintaining and updating** the inventory. It is very important that some entity in the community is taking responsibility for the document. The inventory should be a living document that changes as new information becomes available.

Finally, **use the inventory!** Make sure that new commissioners are made aware of the document. Use the inventory when assessing the impact of new development on town resources and when making planning decisions.

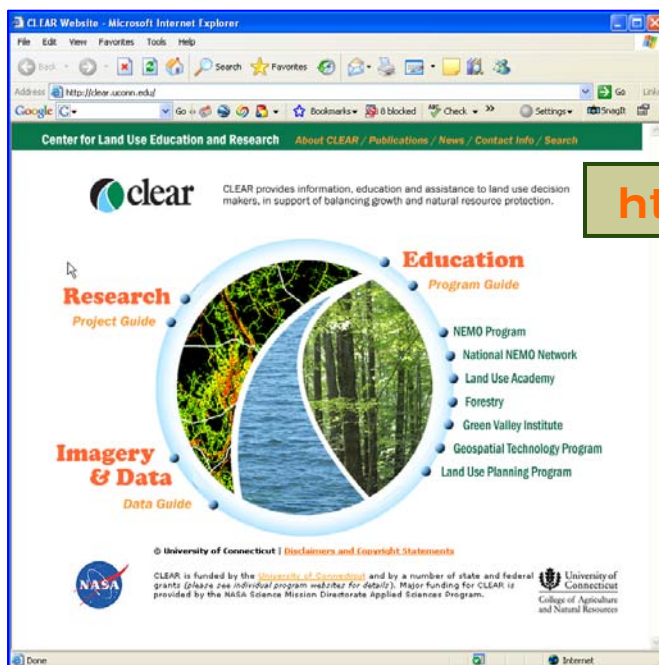
Planning for our community's future is one of the most important civic duties we face. The health and safety of our community both now and in the future depends on the decisions we make today. Using a community resource inventory can provide a rational basis for those decisions and help ensure that our decisions will not impair the quality of life for future generations.

The Community Resource Inventory is a service for Connecticut citizens and communities developed by the *Nonpoint Education for Municipal Officials* (NEMO) Program. NEMO is an educational program for local land use decision makers that promotes natural resource-based planning and site design. NEMO has a many resources for local land use officials, including publications, a wide range of educational workshops, and other on-line tools and information. You can access all the information you need on the NEMO website:

<http://nemo.uconn.edu>

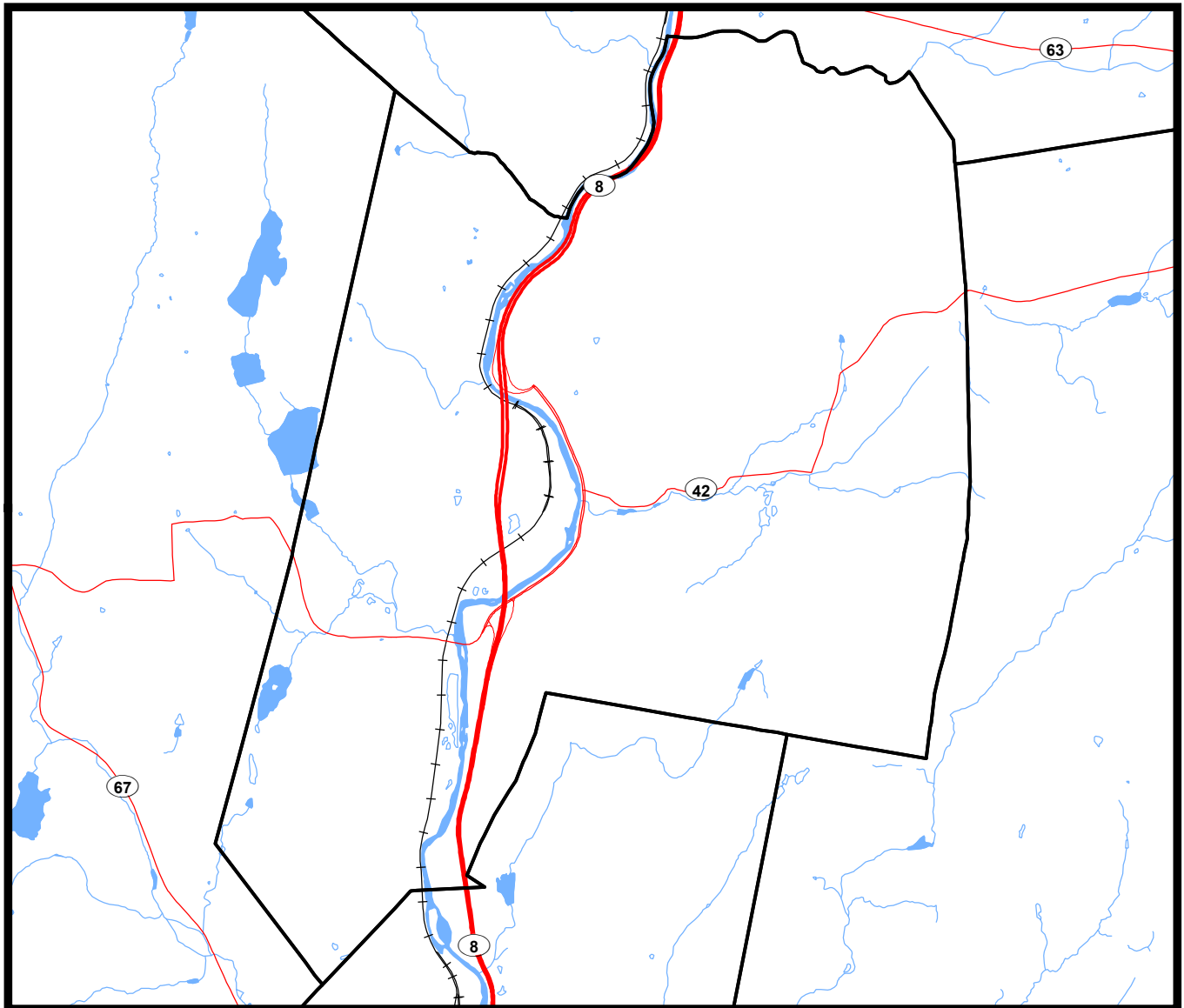


NEMO is a program of the University of Connecticut *Center for Land Use Education and Research* (CLEAR). CLEAR is comprised of a number of integrated research, training, and education programs that link geospatial technology, natural resource protection, and local land use planning. Much of the CLEAR landscape research is available in data, map, and table form over the web. The CLEAR home page is an easy-to-use portal to reach all of these resources, including all of the educational programs.



<http://clear.uconn.edu>

## Community Resource Inventory Map Series



### Legend

- Towns
- Major Highway
- Primary Route
- Secondary Route
- Ramp
- Railroads
- Lakes and Rivers
- Airport Runway
- Airport Boundary



0 0.2 0.4 0.8 1.2  
Miles



**More Information:** Visit <http://clear.uconn.edu/projects/cri>

**Data source:** CT DEP <http://www.ct.gov/dep/gis/> and Tele Atlas North America, Inc.

This project was funded in part by the CT DEP through an EPA Clean Water Act Section 319 Nonpoint Source Grant. NEMO is an educational program of the Center for Land use Education and Research (CLEAR) at the University of Connecticut.

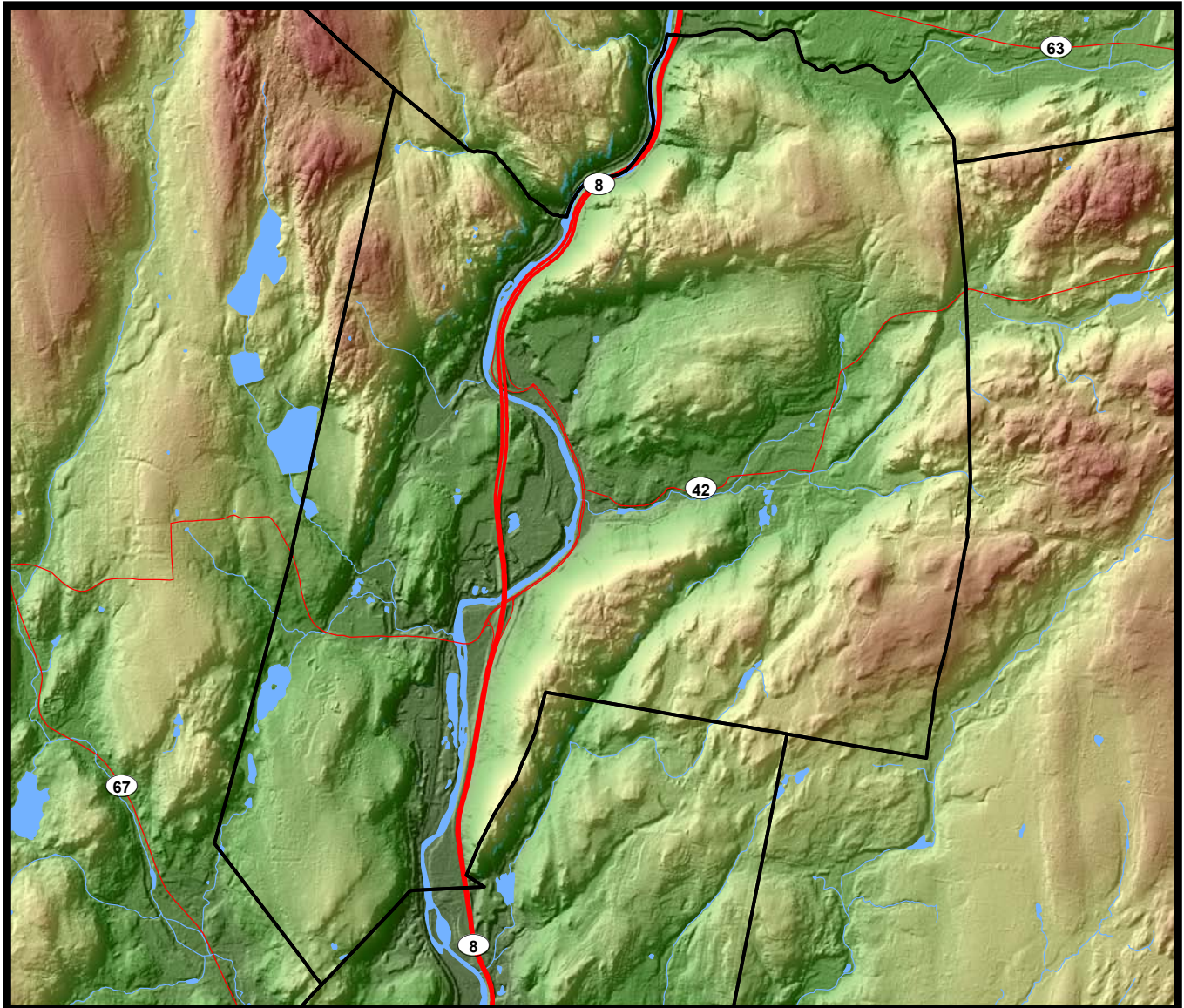
These maps are intended for general information and planning purposes only. They contain no authoritative positional information.



Version 8/28/08



## Community Resource Inventory Map Series



### Legend

- Towns
- Major Highway
- Primary Route
- Secondary Route
- Ramp
- Water

Highest Elevation  
Lowest Elevation



0 0.3 0.6 1.2 1.8 Miles



**More Information:** Visit <http://clear.uconn.edu/projects/cri>

**Data source:** Spatial interpolation of airborne LiDAR data collected in 2000. These elevation data are intended for research, education and demonstration purposes only. They have a horizontal resolution of 10 feet and a vertical resolution of 1 foot. The LiDAR data from which the elevation surface was interpolated had a horizontal spacing of generally 20 feet.

This project was funded in part by the CT DEP through an EPA Clean Water Act Section 319 Nonpoint Source Grant. NEMO is an educational program of the Center for Land use Education and Research (CLEAR) at the University of Connecticut.

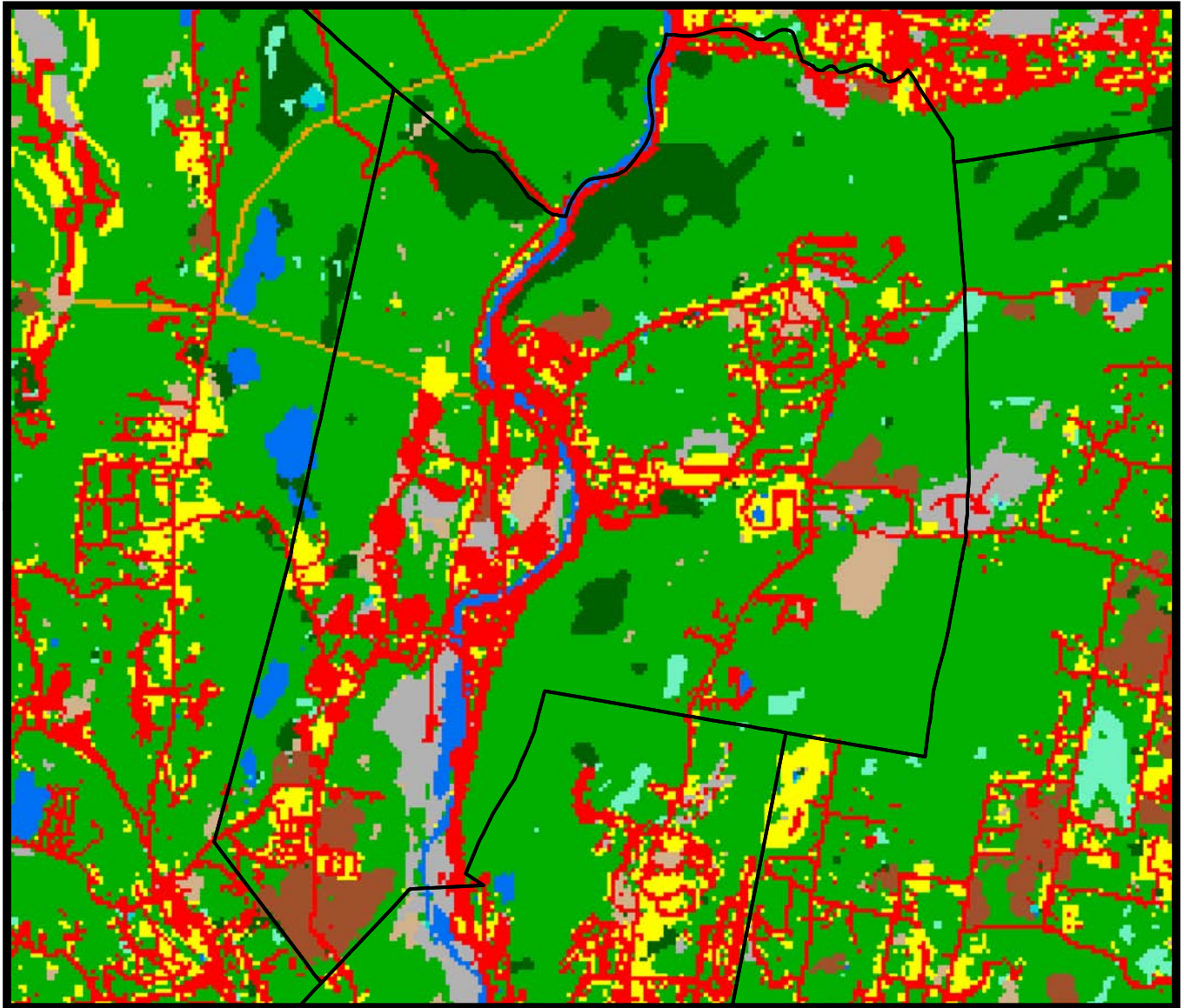
These maps are intended for general information and planning purposes only. They contain no authoritative positional information.



Version 8/28/08



## Community Resource Inventory Map Series



### Legend

- Towns
- Developed
- Turf and Grass
- Other Grass
- Agricultural Field
- Deciduous Forest
- Coniferous Forest
- Water
- Non-forested Wetland
- Forested Wetland
- Tidal Wetland
- Barren
- Utility ROW (Forest)



0 0.3 0.6 1.2 1.8 Miles



**More Information:** Visit <http://clear.uconn.edu/projects/cr>

**Data source:** The 2006 land cover was created by the Center for Land Use Education and Research (CLEAR) at the University of Connecticut. Visit <http://clear.uconn.edu/projects/landscape> for more information.

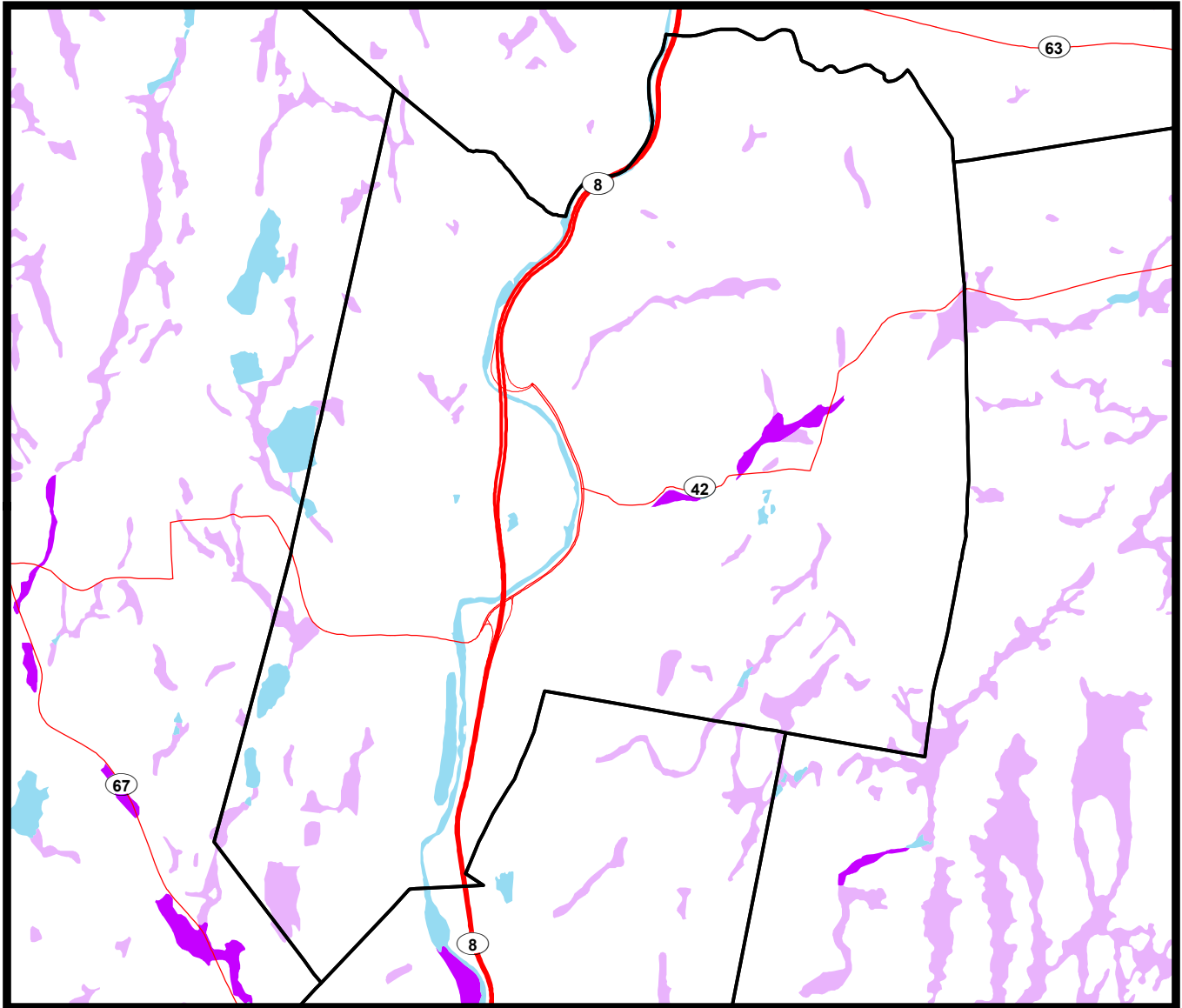
This project was funded in part by the CT DEP through an EPA Clean Water Act Section 319 Nonpoint Source Grant. NEMO is an educational program of the Center for Land use Education and Research (CLEAR) at the University of Connecticut.

These maps are intended for general information and planning purposes only. They contain no authoritative positional information.



Version 10/06/08

## Community Resource Inventory Map Series



### Legend

- Towns
- Major Highway
- Primary Route
- Secondary Route
- Ramp
- Alluvial and floodplain soils
- Poorly/very poorly drained soils
- Water



0 0.3 0.6 1.2 1.8 Miles



**More Information:** Visit <http://clear.uconn.edu/projects/cri>

**Data source:** Natural Resources Conservation Service (NRCS) by way of the CT DEP <http://www.ct.gov/dep/gis/>

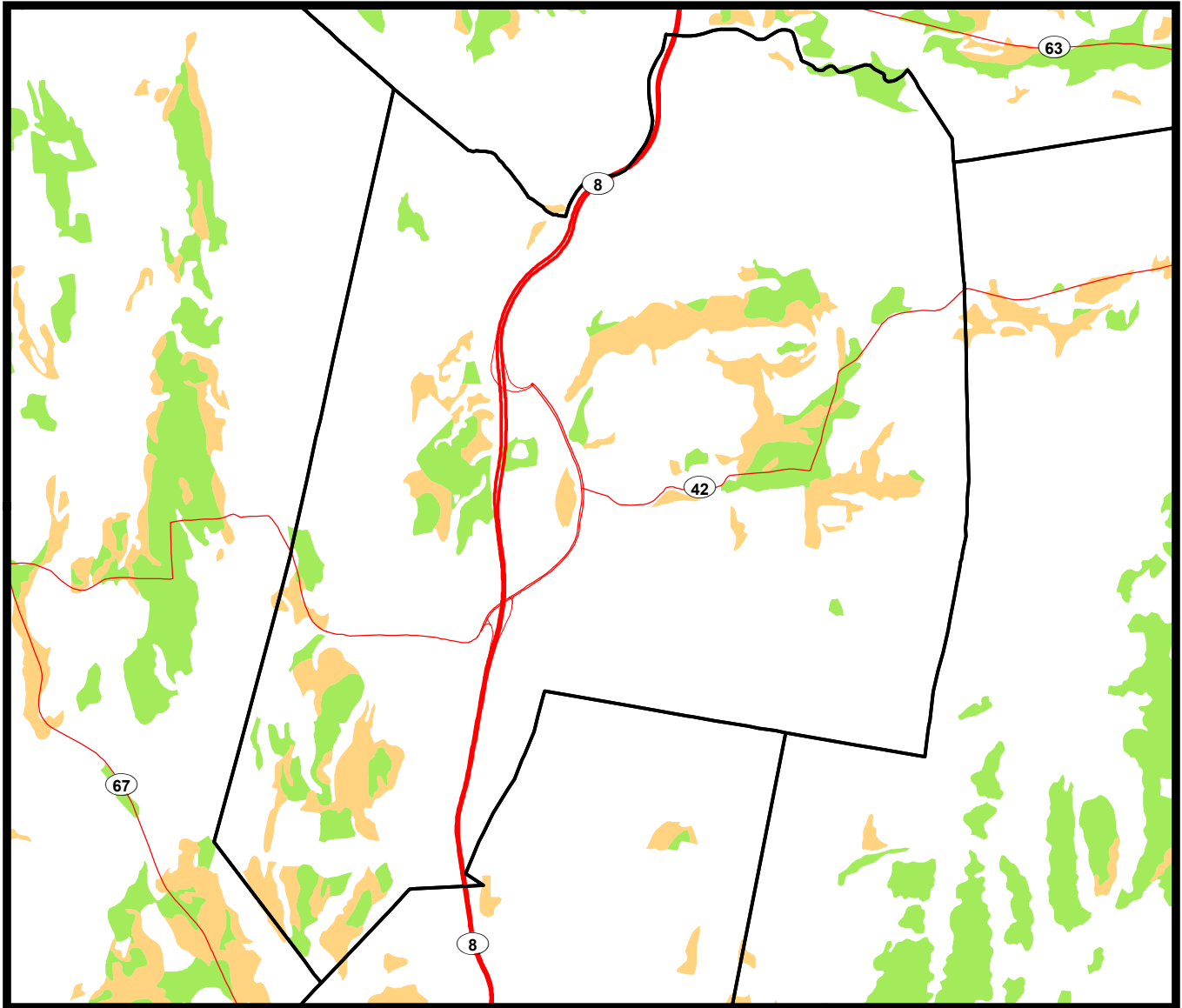
This project was funded in part by the CT DEP through an EPA Clean Water Act Section 319 Nonpoint Source Grant. NEMO is an educational program of the Center for Land use Education and Research (CLEAR) at the University of Connecticut.

These maps are intended for general information and planning purposes only. They contain no authoritative positional information.



Version 8/28/08

## Community Resource Inventory Map Series



### Legend

- Towns
- Major Highway
- Primary Route
- Secondary Route
- Ramp
- Important Farmland Soils
- Prime Farmland Soils



0 0.3 0.6 1.2 1.8 Miles



**More Information:** Visit <http://clear.uconn.edu/projects/cri>

**Data source:** Natural Resources Conservation Service (NRCS) by way of the CT DEP (<http://dep.state.ct.us/gis/>).

This project was funded in part by the CT DEP through an EPA Clean Water Act Section 319 Nonpoint Source Grant. NEMO is an educational program of the Center for Land use Education and Research (CLEAR) at the University of Connecticut.

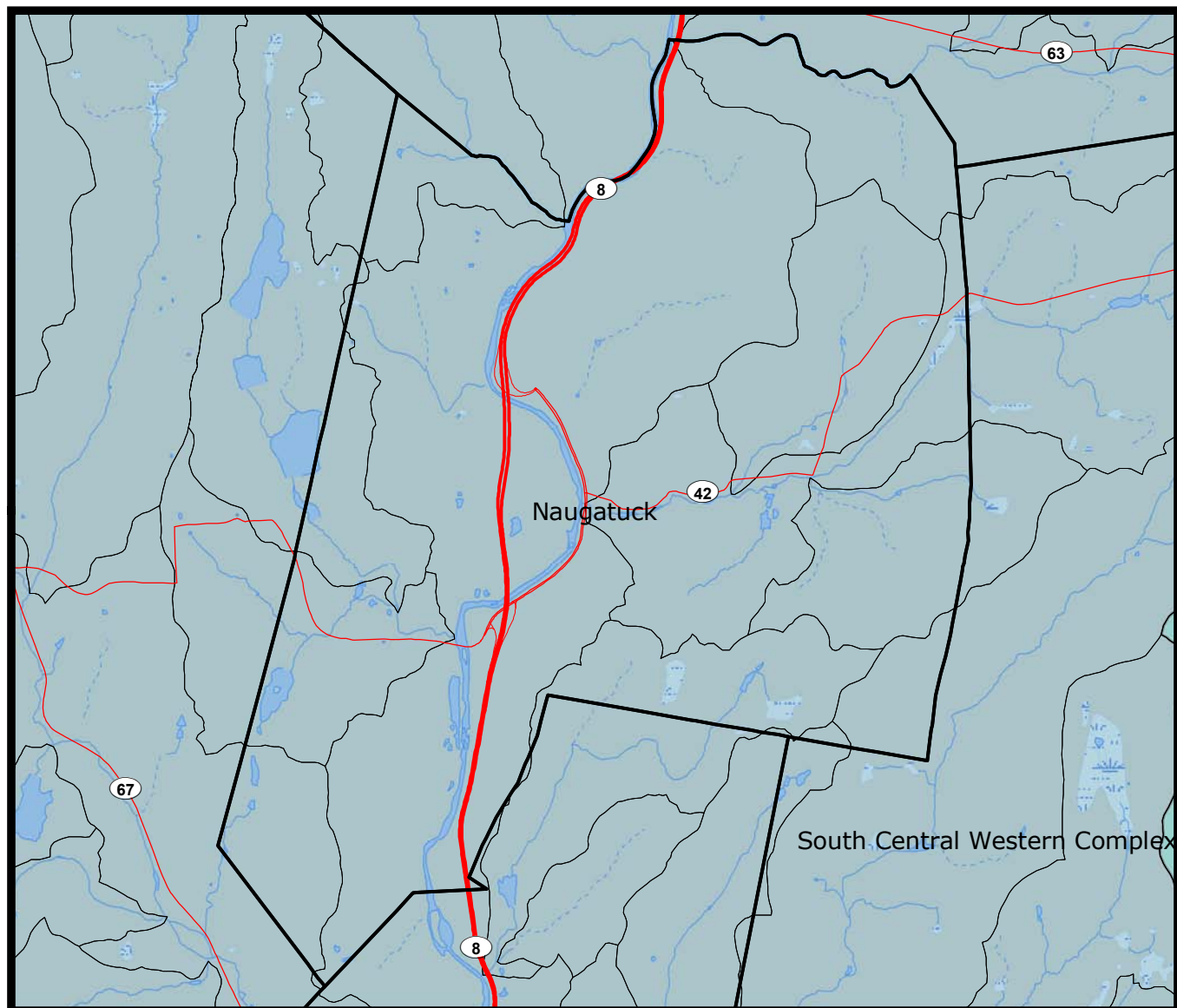
These maps are intended for general information and planning purposes only. They contain no authoritative positional information.



Version 8/28/08



## Community Resource Inventory Map Series

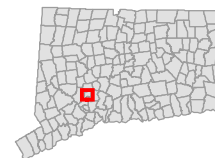


### Legend

- Towns
- Major Highway
- Primary Route
- Secondary Route
- Ramp
- Local Basins
- Intermittent Water
- Water/Shore
- Water
- Intermittent Water
- Marsh
- Regional Basins (colors)



0 0.3 0.6 1.2 1.8 Miles



**More Information:** Visit <http://clear.uconn.edu/projects/cri>

**Data source:** CT DEP <http://www.ct.gov/dep/gis/>

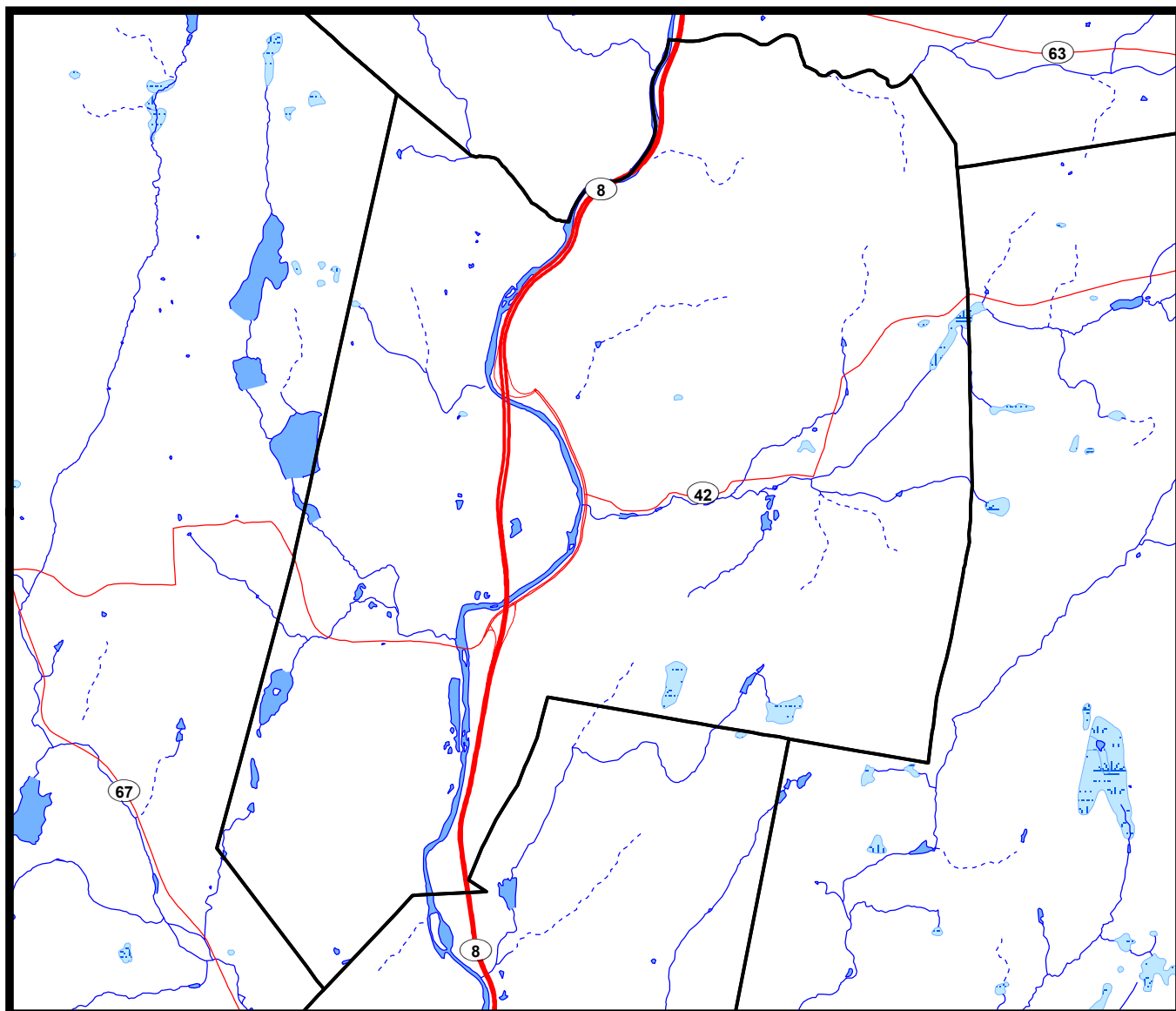
This project was funded in part by the CT DEP through an EPA Clean Water Act Section 319 Nonpoint Source Grant. NEMO is an educational program of the Center for Land use Education and Research (CLEAR) at the University of Connecticut.

These maps are intended for general information and planning purposes only. They contain no authoritative positional information.



Version 8/28/08

## Community Resource Inventory Map Series

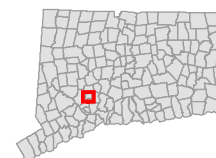


### Legend

- Towns
- Major Highway
- Primary Route
- Secondary Route
- Ramp
- Flat
- Intermittent Water
- Water/Shore
- Water
- Intermittent Water
- Flats
- Rocks
- Inundated Area
- Marsh on Quad



0 0.3 0.6 1.2 1.8 Miles



**More Information:** Visit <http://clear.uconn.edu/projects/cri>

**Data source:** CT DEP <http://www.ct.gov/dep/gis/>

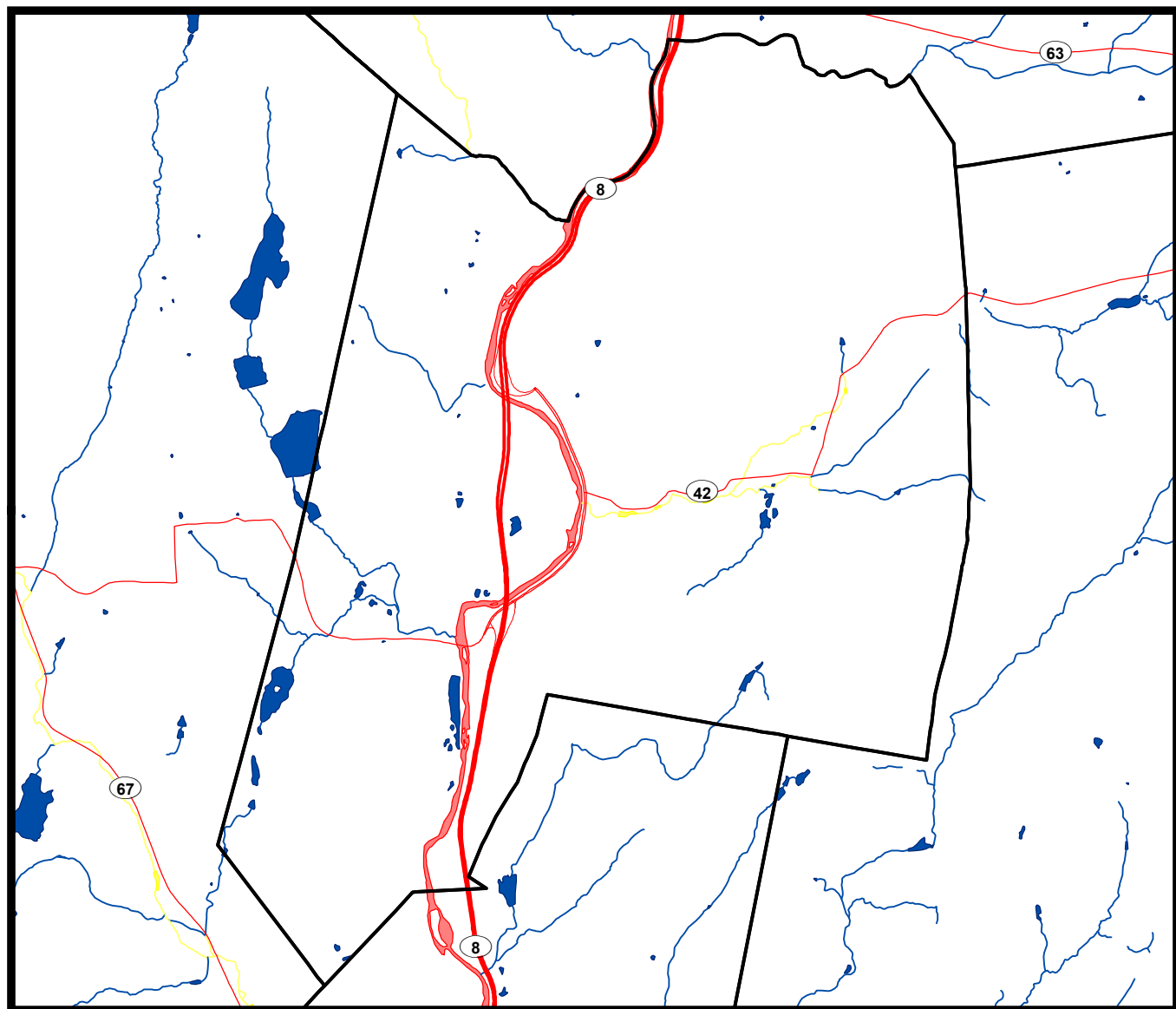
This project was funded in part by the CT DEP through an EPA Clean Water Act Section 319 Nonpoint Source Grant. NEMO is an educational program of the Center for Land use Education and Research (CLEAR) at the University of Connecticut.

These maps are intended for general information and planning purposes only. They contain no authoritative positional information.



Version 8/28/08

## Community Resource Inventory Map Series



### Legend

- Towns
- Major Highway
- Primary Route
- Secondary Route
- Ramp

### Surface Water Quality

- Good to excellent natural quality (A, AA)
- Fishable, swimmable (B)
- Natural quality may be threatened (B/A, B/AA)
- Impaired (C/A, C/B, D/B)
- Coastal good to excellent natural quality (SA)
- Coastal fishable, swimmable (SB)
- Coastal impaired



0 0.3 0.6 1.2 1.8 Miles



**More Information:** Visit <http://clear.uconn.edu/projects/cri>

**Data source:** CT DEP <http://www.ct.gov/dep/gis/>

This project was funded in part by the CT DEP through an EPA Clean Water Act Section 319 Nonpoint Source Grant. NEMO is an educational program of the Center for Land use Education and Research (CLEAR) at the University of Connecticut.

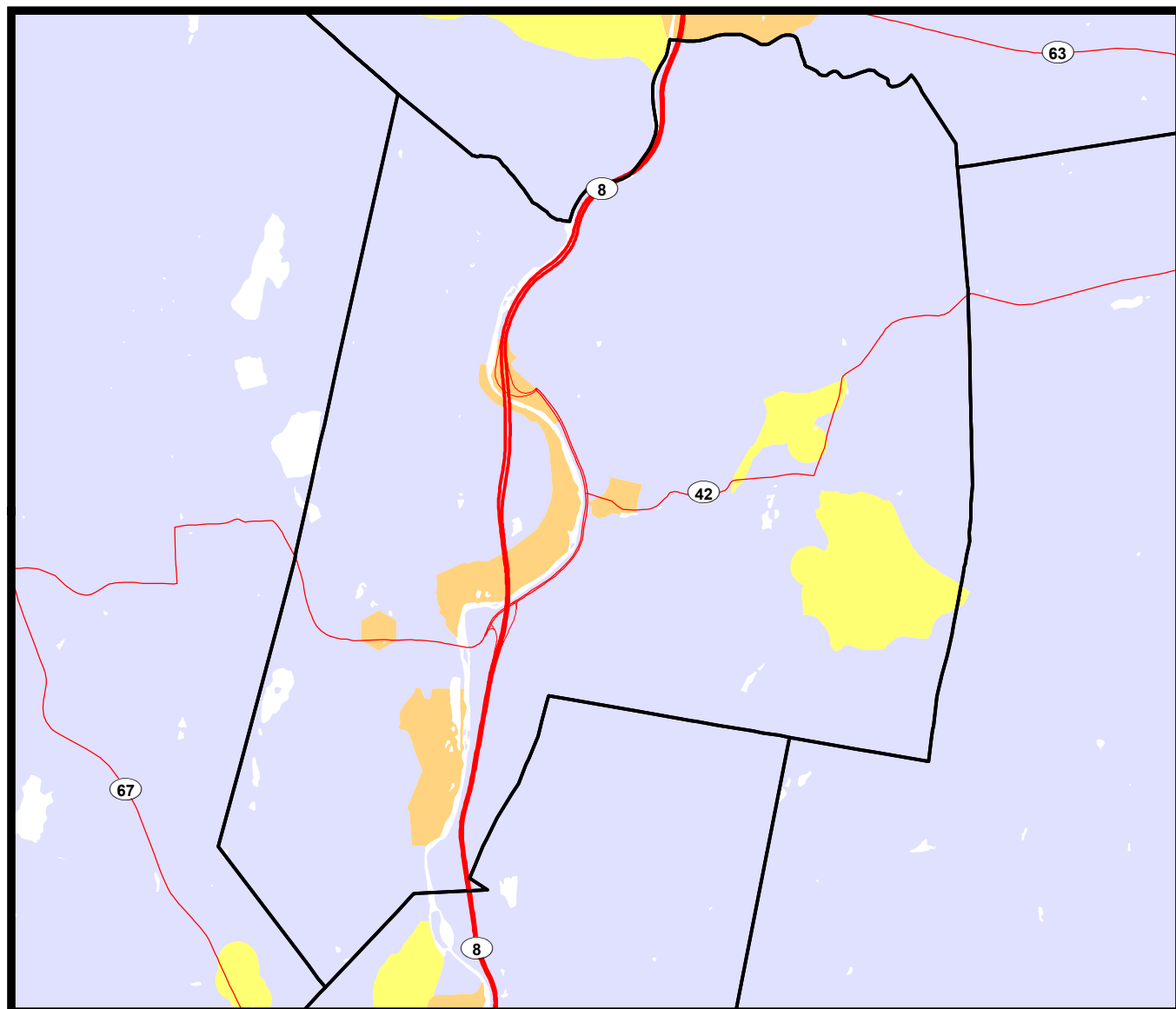
These maps are intended for general information and planning purposes only. They contain no authoritative positional information.



Version 8/28/08



## Community Resource Inventory Map Series



### Legend

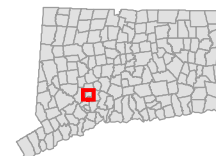
- Towns
- Major Highway
- Primary Route
- Secondary Route
- Ramp

### Ground Water Quality

- Natural quality/suitable for drinking (GAA, GA)
- Threatened (GA\*, GAA\*)
- Possible degradation/not suitable for drinking (GB)
- Impaired (GC)



0 0.3 0.6 1.2 1.8 Miles



**More Information:** Visit  
<http://clear.uconn.edu/projects/cri>

**Data source:** CT DEP <http://www.ct.gov/dep/gis/>

Ground Water Quality updated April 2007.

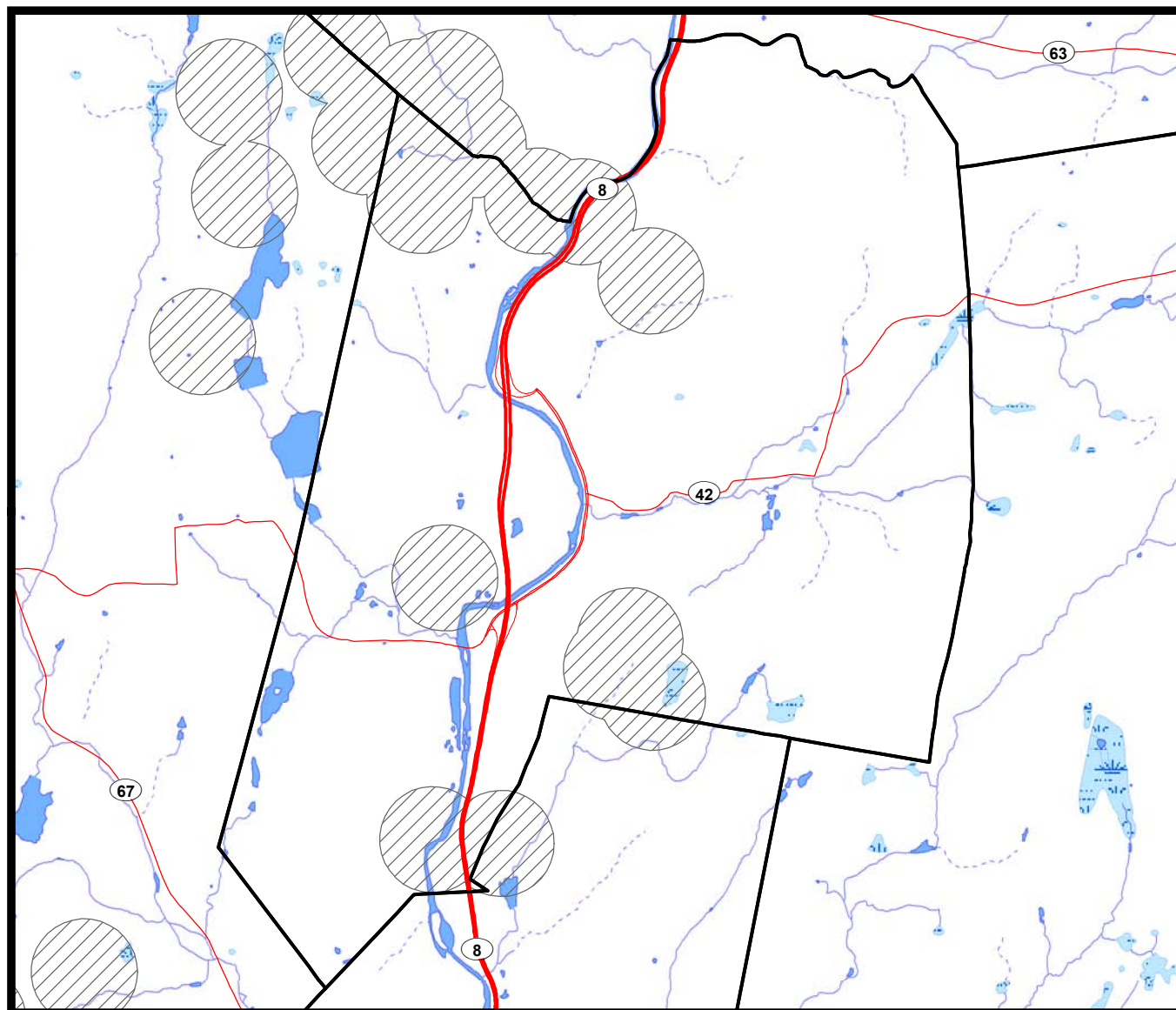
This project was funded in part by the CT DEP through an EPA Clean Water Act Section 319 Nonpoint Source Grant. NEMO is an educational program of the Center for Land use Education and Research (CLEAR) at the University of Connecticut.

These maps are intended for general information and planning purposes only. They contain no authoritative positional information.



Version 8/28/08

## Community Resource Inventory Map Series



### Legend

- Towns
- Major Highway
- Primary Route
- Secondary Route
- Ramp
- Natural Diversity Areas
- Water
- Intermittent Water
- Marsh



0 0.3 0.6 1.2 1.8 Miles



**More Information:** Visit <http://clear.uconn.edu/projects/cri>

**Data source:** All data layers from CT DEP <http://www.ct.gov/dep/gis/>

National Diversity Database updated June 2008.

This project was funded in part by the CT DEP through an EPA Clean Water Act Section 319 Nonpoint Source Grant. NEMO is an educational program of the Center for Land use Education and Research (CLEAR) at the University of Connecticut.

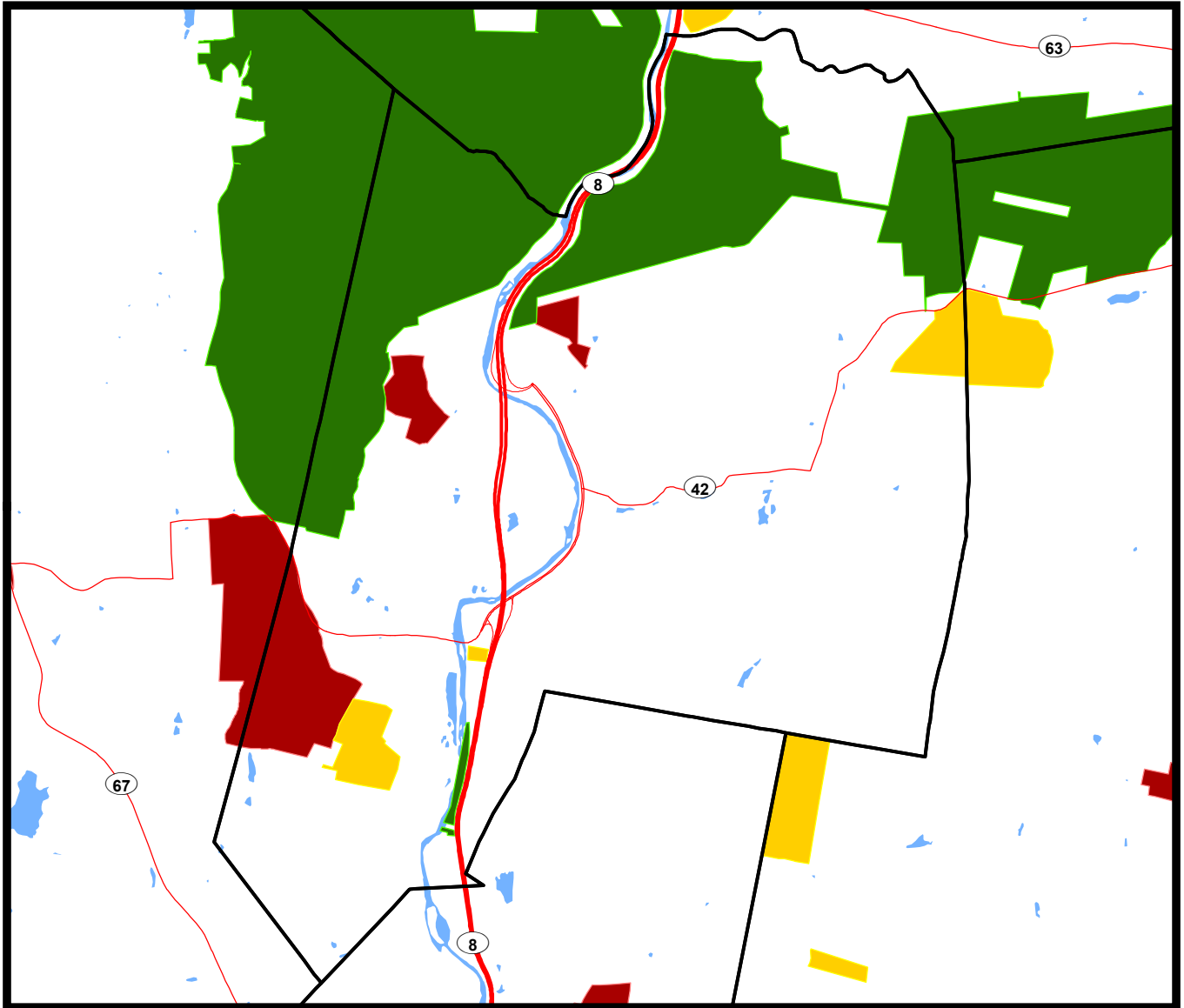
These maps are intended for general information and planning purposes only. They contain no authoritative positional information.



Version 8/28/08



## Community Resource Inventory Map Series



### Legend

- Towns
- Major Highway
- Primary Route
- Secondary Route
- Ramp
- Dep Property
- Municipal Open Space
- Private Open Space
- Federal Property
- Water



0 0.3 0.6 1.2 1.8 Miles



**More Information:** Visit <http://clear.uconn.edu/projects/cr>

**Data source:** All data layers from CT DEP <http://www.ct.gov/dep/gis/>. DEP is in the process of updating the open space data layer but the information is not yet available. DEP Property updated October 2008.

This project was funded in part by the CT DEP through an EPA Clean Water Act Section 319 Nonpoint Source Grant. NEMO is an educational program of the Center for Land use Education and Research (CLEAR) at the University of Connecticut.

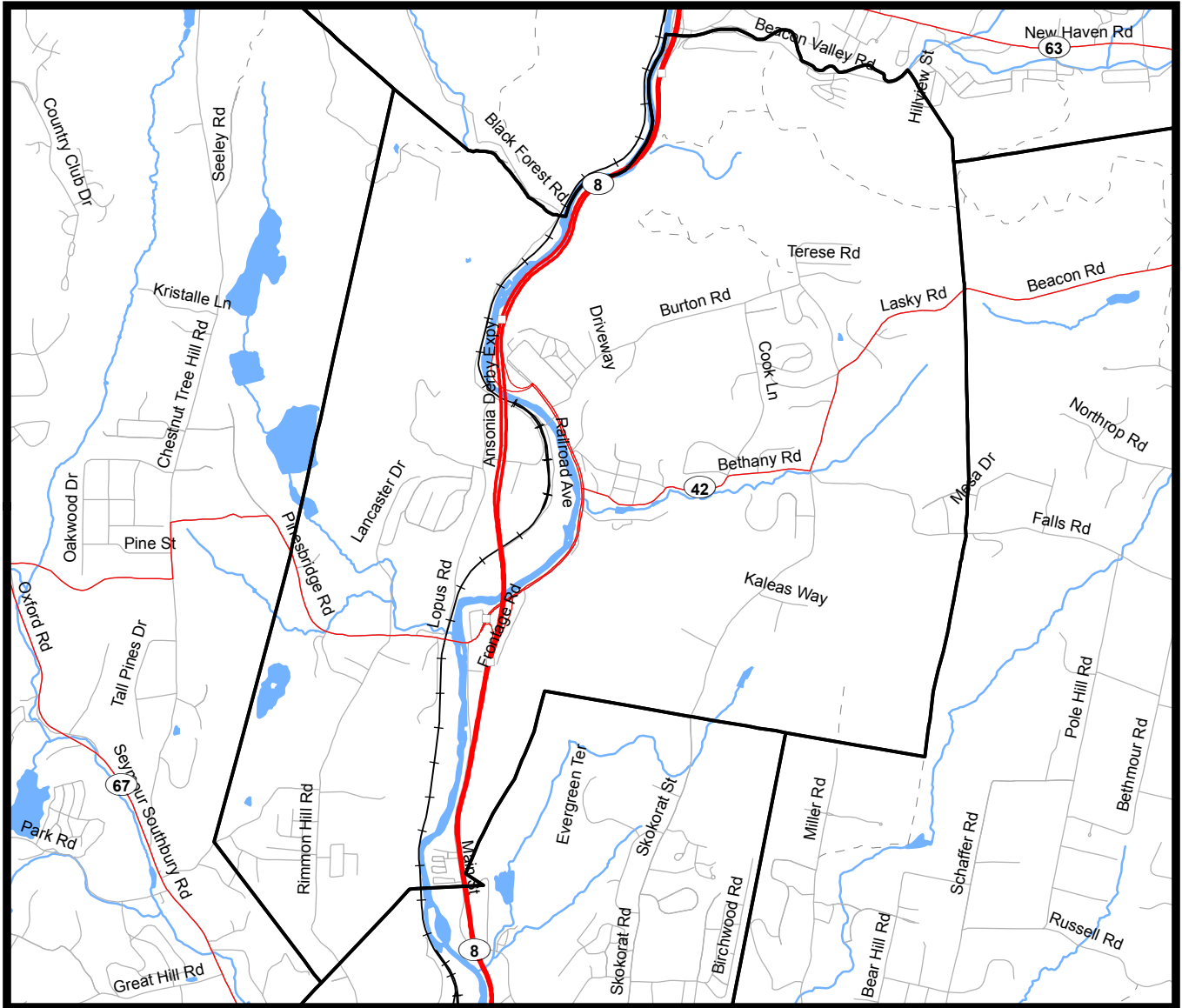
These maps are intended for general information and planning purposes only. They contain no authoritative positional information.



Version 10/29/08



## Community Resource Inventory Map Series



### Legend

- Towns
- Exit
- \* Train station
- ◆ Bus terminal
- Marine terminal
- Major Highway
- Primary Route
- Secondary Route
- Ramp
- + Railroad
- Street
- Trail
- Water



0 0.3 0.6 1.2 1.8 Miles



**More Information:** Visit <http://clear.uconn.edu/projects/cr>

**Data source:** Transportation layers from Tele Atlas North America, Inc.  
Towns, trails and water from CT DEP <http://www.ct.gov/dep/gis/>

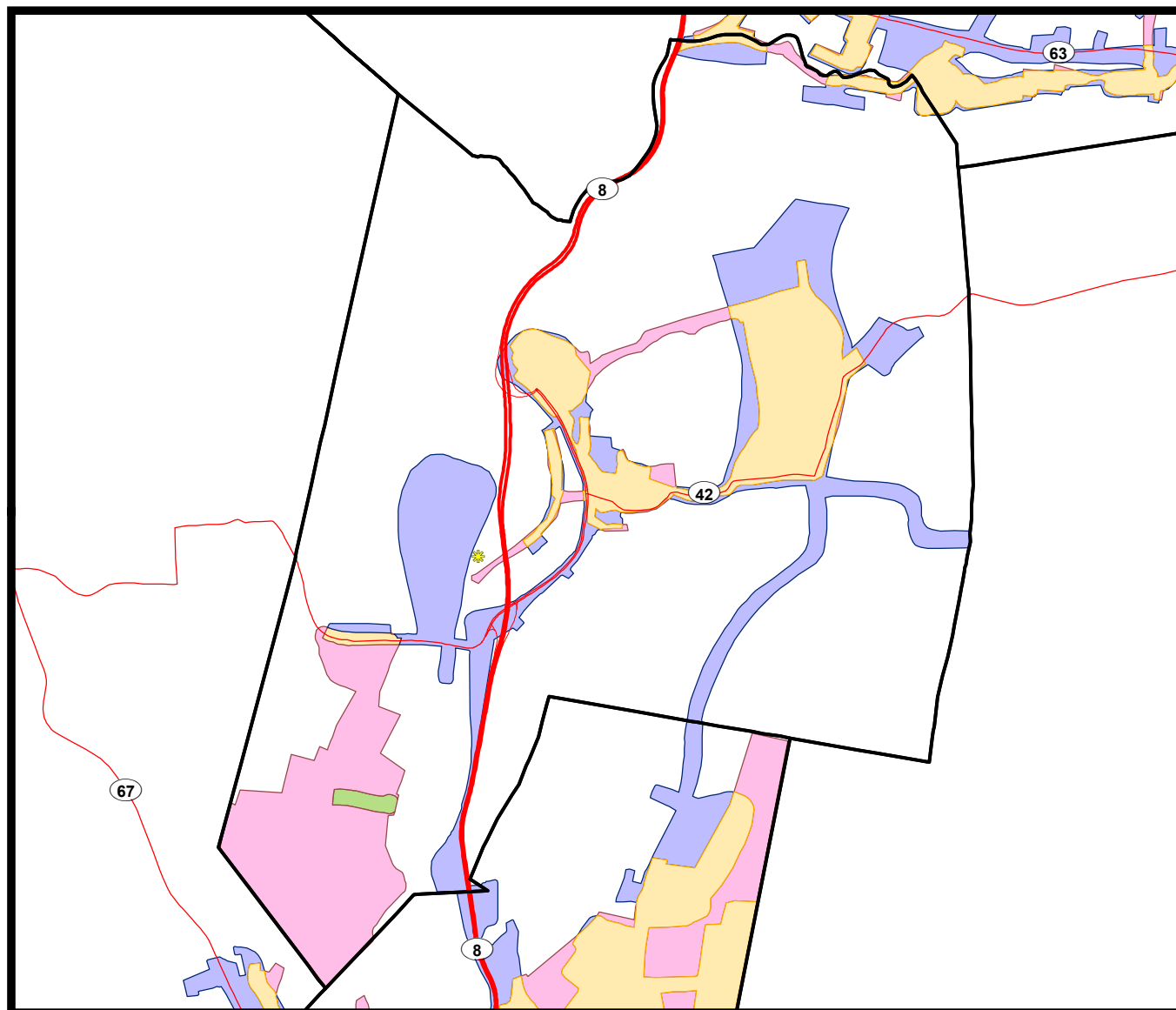
This project was funded in part by the CT DEP through an EPA Clean Water Act Section 319 Nonpoint Source Grant. NEMO is an educational program of the Center for Land use Education and Research (CLEAR) at the University of Connecticut.

These maps are intended for general information and planning purposes only. They contain no authoritative positional information.



Version 8/28/08

## Community Resource Inventory Map Series



### Legend

- Towns
- Major Highway
- Primary Route
- Secondary Route
- Ramp
- Municipal Solid Waste Sites
- Sewer Service Only
- Water Service Only
- Sewer and Water Service
- Water Service/Proposed Sewer
- Proposed Sewer Service



0 0.3 0.6 1.2 1.8 Miles



**More Information:** Visit <http://clear.uconn.edu/projects/cri>

**Data source:** CT DEP <http://www.ct.gov/dep/gis/>

Sewer Areas updated October 2007.

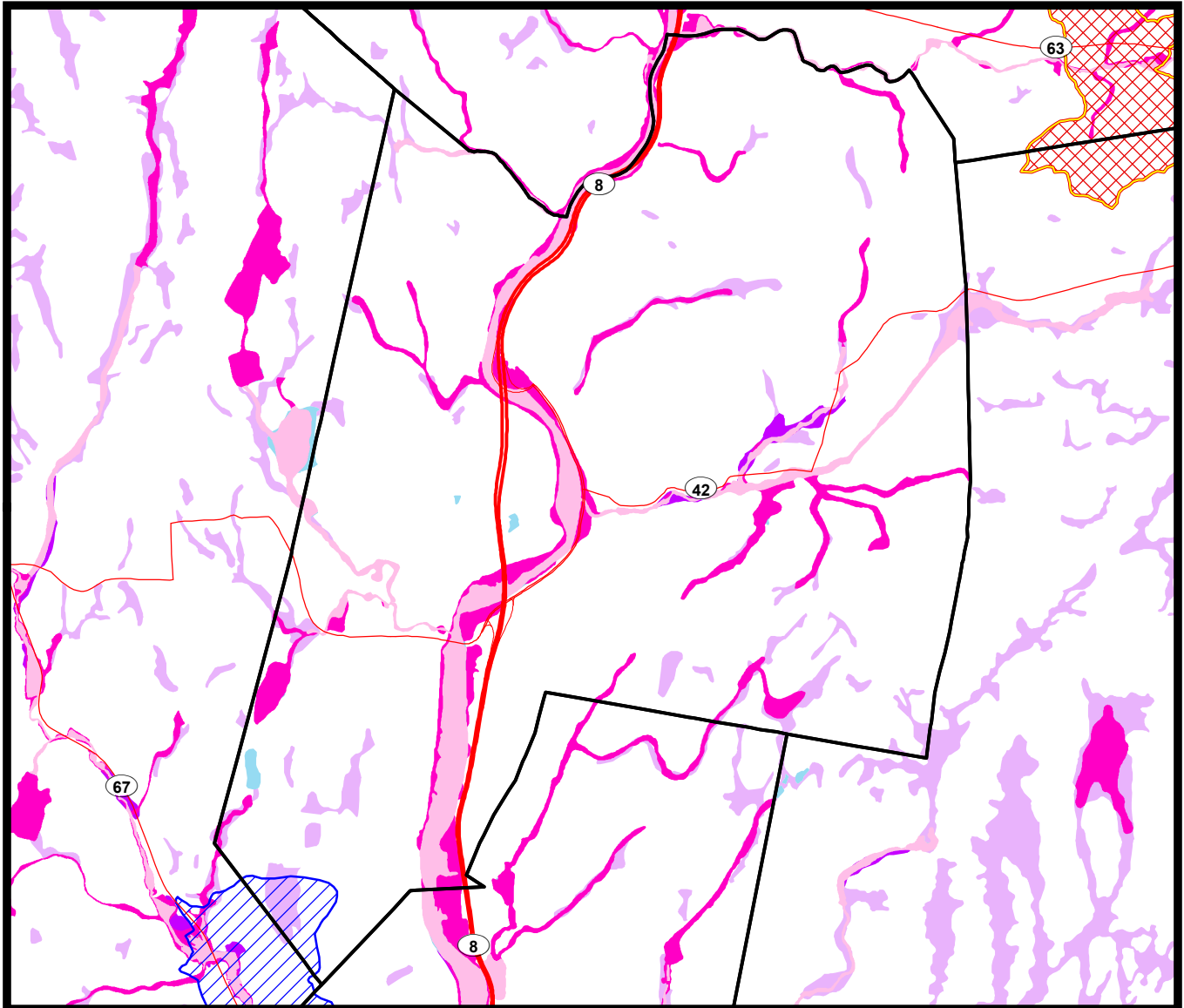
This project was funded in part by the CT DEP through an EPA Clean Water Act Section 319 Nonpoint Source Grant. NEMO is an educational program of the Center for Land use Education and Research (CLEAR) at the University of Connecticut.

These maps are intended for general information and planning purposes only. They contain no authoritative positional information.



Version 8/28/08

## Community Resource Inventory Map Series



- Towns
- Major Highway
- Primary Route
- Secondary Route
- Ramp
- Final Aquifer Protection Area (APA)
- Final, Adopted APA
- Preliminary APA
- Alluvial and floodplain soils
- Poorly/very poorly drained soils
- Water
- 100 Year Flood Zone
- 500 Year Flood Zone
- Floodway in Zone AE
- Other Flood Areas
- Coastal Boundary



0 0.3 0.6 1.2 1.8 Miles



**More Information:** Visit <http://clear.uconn.edu/projects/cri>

**Data source:** CT DEP <http://www.ct.gov/dep/gis/>

Aquifer Protection Areas updated June 2008.

This project was funded in part by the CT DEP through an EPA Clean Water Act Section 319 Nonpoint Source Grant. NEMO is an educational program of the Center for Land use Education and Research (CLEAR) at the University of Connecticut.

These maps are intended for general information and planning purposes only. They contain no authoritative positional information.



Version 8/28/08