



# IWWC Commission Update

Chatfield Farms  
4/14/21 to 5/12/21

## Current Construction Activity

### Roads

Top Coating of Dogwood Lane complete. Inspection performed by DeCarlo and Doll.

### Water Channels

None

### Storm Systems

None

### Utilities

Pump Station - Completion of this system is on hold as we are waiting for a meter pedestal to come to establish power. Eversource is gearing up to install power on Bayberry Court.

### Units

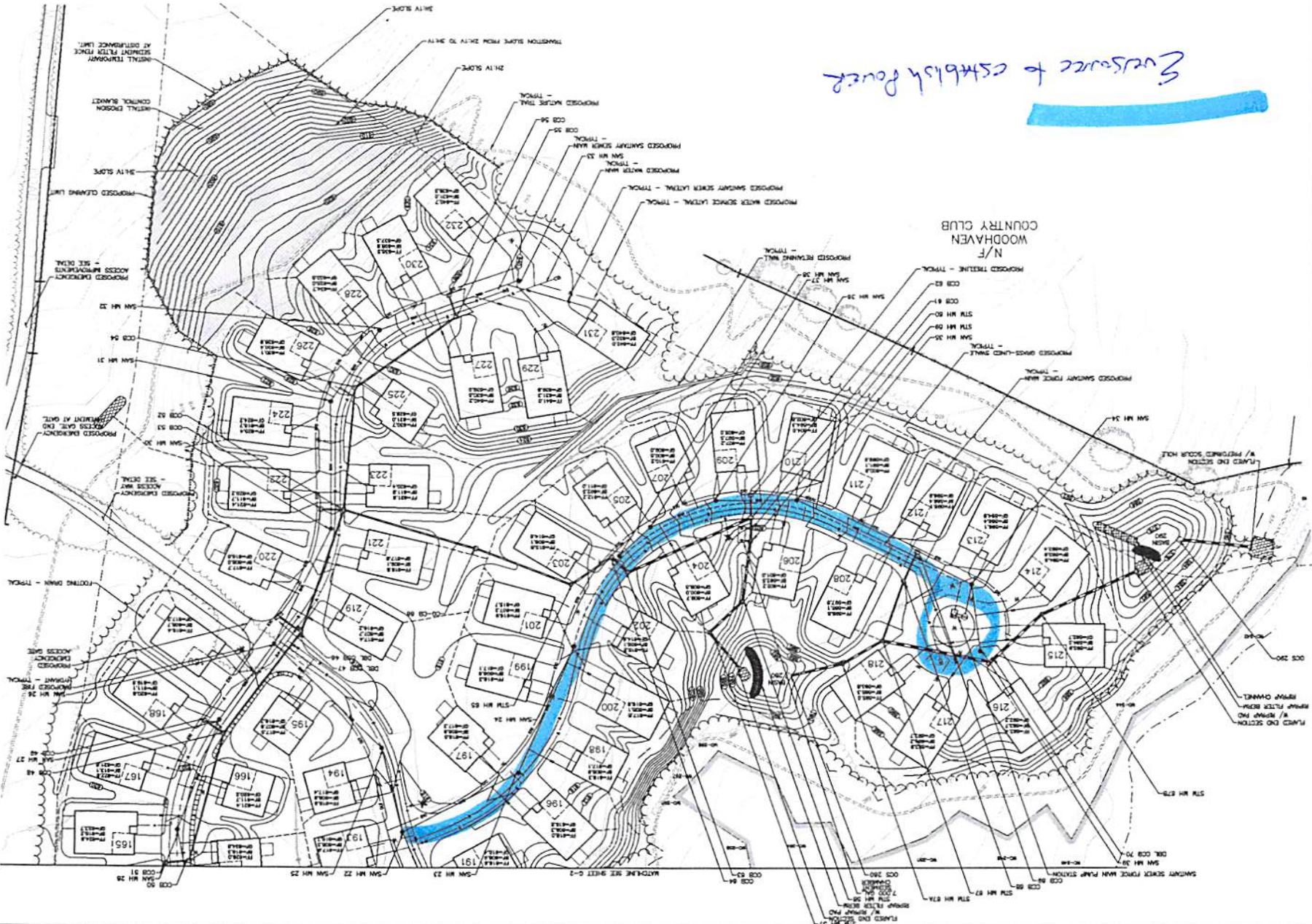
120 Foundation  
121 Mechanicals  
122 Mechanicals  
134 Closed  
135 Finishes  
136 Ready to close  
141 Closed  
142 Closed  
191 Flooring  
196 Mechanicals  
198 Drywall  
200 Mechanicals  
211 Framing  
212 Foundation  
215 Mechanicals  
216 Mechanicals  
217 Framing  
218 Excavation  
220 Foundation

**General Notes**  
None

**E&S Inspections**  
Please see attached report from DeCarlo and Doll and attached pictures for corrections.  
Roadways swept on weekly basis and was swept this past Tuesday.

Source to establish power

WOODHAVEN COUNTRY CLUB  
N/F



G-3

DATE: OCTOBER 8, 2011  
SCALE: AS SHOWN  
DRAWN BY: J.D.

SITE PLAN - GRADING & UTILITIES  
CHATEAU FABRIS  
ACTIVE ADULT COMMUNITY  
PHASES 3,4,5  
BROOKLYN ROAD  
BILCOON FALLS, CONNECTICUT

REVISIONS

NO. 1	DATE	DESCRIPTION

McLORIN & MacBROOM  
Civil Engineers & Surveyors  
2000 West Main Street  
Farmington, CT 06030  
Phone: 860.271.1171 Fax: 860.271.2733  
www.mclorin-macbroom.com

