



IWWC Commission Update

Chatfield Farms
3/10/21 to 4/7/21

Current Construction Activity

Roads

Asphalt plants will be opening next week. Plan of bindering the remaining portion of Bayberry Court the week of 4/19. Also plan of top coating Dogwood Lane in earlier portion of project. Town Engineer will be contacted for inspection.

Water Channels

None

Storm Systems

None

Utilities

Pump Station - Town engineer stopped out the witness concrete ballast for station and connections. This is still an ongoing project with a generator and electrical connections to be done.

Units

- 120 Foundation
- 121 Mechanicals
- 122 Mechanicals
- 134 Ready to Close
- 135 Finishes
- 136 Ready to close
- 138 Closed
- 141 Finishes
- 142 Finishes
- 191 Drywall
- 196 Mechanicals
- 198 Mechanicals
- 200 Mechanicals
- 215 Framing
- 216 Framing
- 220 Foundation

E&S Inspections

Performed after each rain event and roadways swept at the end of each week.

EG Home Inspections

All erosion control systems are monitored and inspected prior to, during and after each rain event. Discrepancies are dealt with in a timely fashion.

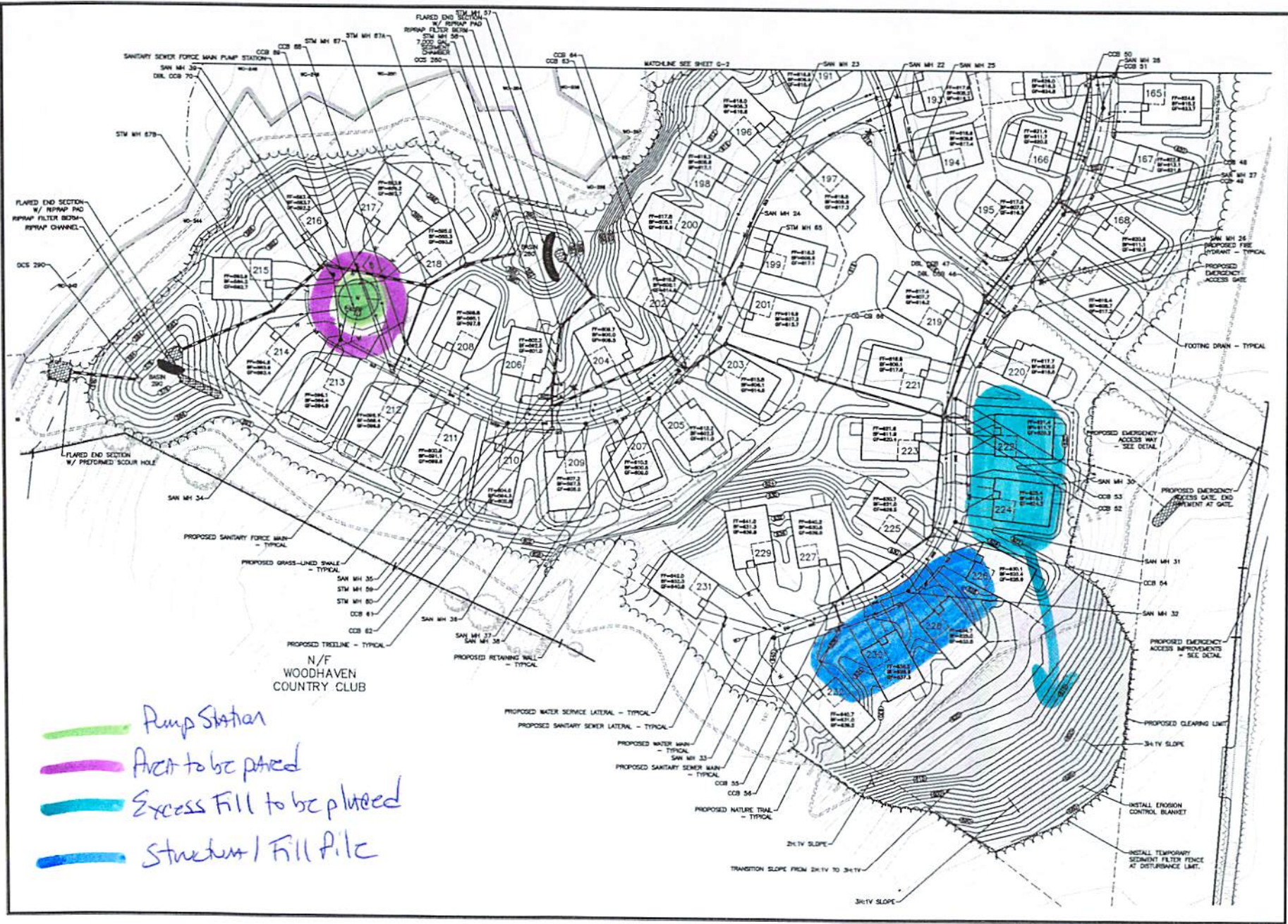
Monitoring February

		Storm Events					
		3/19/2021	3/25/2021	3/29/2021			
Location							
1	Bridge*	0.87	0.54	0.76			
2	OCS160	1.04	1.67	1.28			
3	OCS240	1.87	1.41	1.04			
4	BAS260	2.41	1.74	1.87			

* This monitoring point is the point where all water on site leaves the property - represents quality of the water leaving the site.

General Notes

Started to place surplus of fill in lower section of Phase 5. Please see attached drawing.



- Pump Station
- Area to be paved
- Excess Fill to be placed
- Structure / Fill Pile



MILONE & MACBROOM
 115 South Main Street
 Cheshire, Connecticut 06115
 Phone: 860.534.1173
 Fax: 860.534.1174
 www.milone-macbroom.com

REVISION	DATE	BY	CHK

SITE PLAN - GRADING & UTILITIES
 CHATFIELD FARMS
 ACTIVE ADULT COMMUNITY
 PHASES 3A,5
 BEACON ROAD
 BEACON FALLS, CONNECTICUT

DLO	CSH	DLO

DATE: OCTOBER 8, 2014
 PROJECT NO: 8275-01